

More about nutrition and opportunities available

Dr Emily Clarke

Consultant Gastroenterologist

University Hospital Southampton

Conflicts of Interests Declaration

- BAPEN Medical chair
- Organiser of Southampton Practical Nutrition Support Course; previously supported by Nutricia
- No other conflicts of interest

Nutrition competencies for all Gastroenterologists (JRCPTB)

- Nutritional screening and assessment ✓
- Weight loss and anorexia ✓
- Obesity ✓
- Malabsorption and anaemia ✓
- Artificial nutrition support ✓
- Percutaneous Endoscopic Gastrostomy ✓

Advanced Nutrition competencies (JRCPTB)

- General nutrition
- General Intestinal Failure
- Short bowel: jejunostomy / high output stoma
- Short bowel: jejunum in continuity with colon
- Inflammatory bowel disease
- Ischaemia
- Post-operative complications
- Enteric dysmotility
- Management of pancreatitis
- Nutrition in liver disease
- Management of abdominal malignancy
- Chemotherapy and irradiation
- Post gastric surgery
- Parenteral nutrition
- Enteral nutrition
- Post gastric surgery
- Eating disorders
- Ethical and legal issues that arise in nutrition support

Ethics



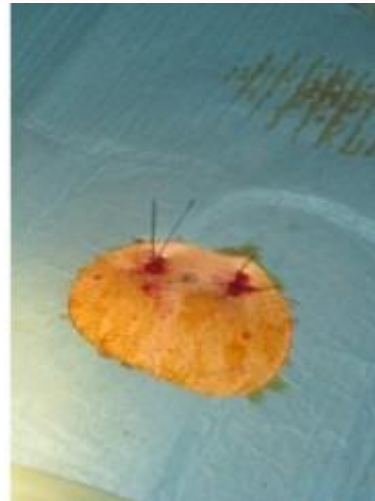
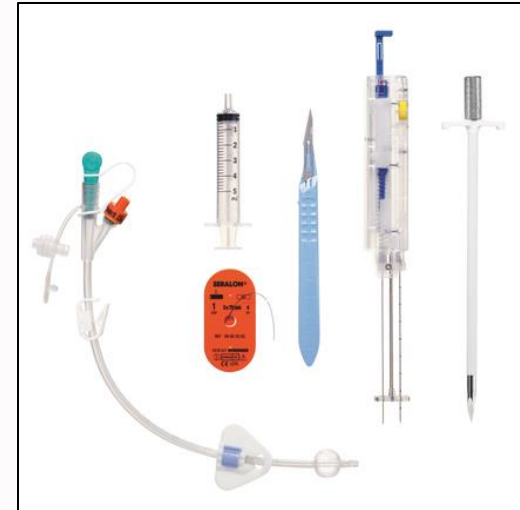
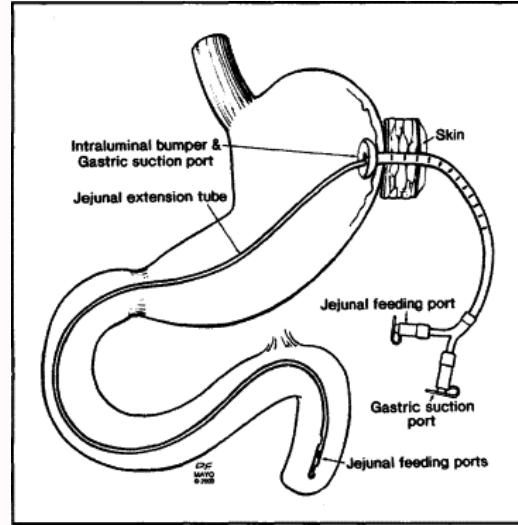
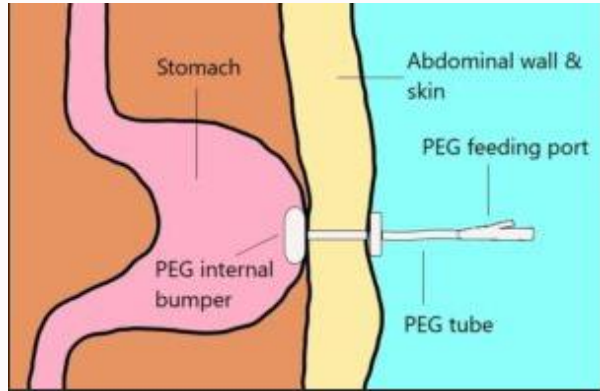
Medical emergencies in eating disorders (MEED)

Guidance on recognition and management

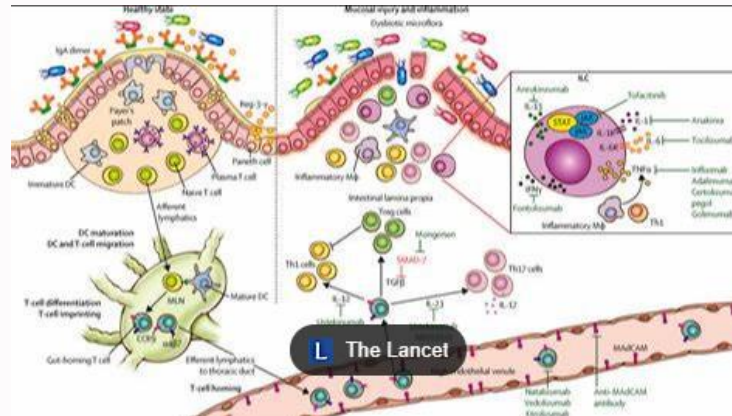
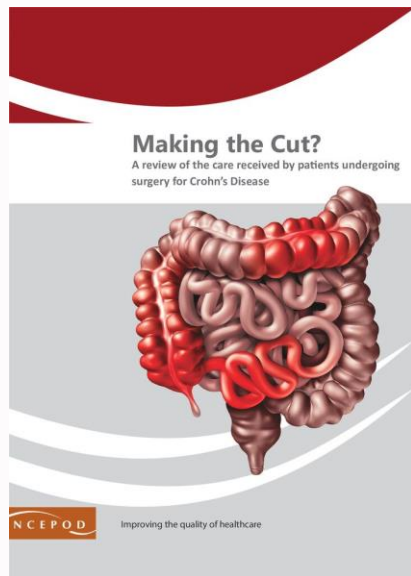
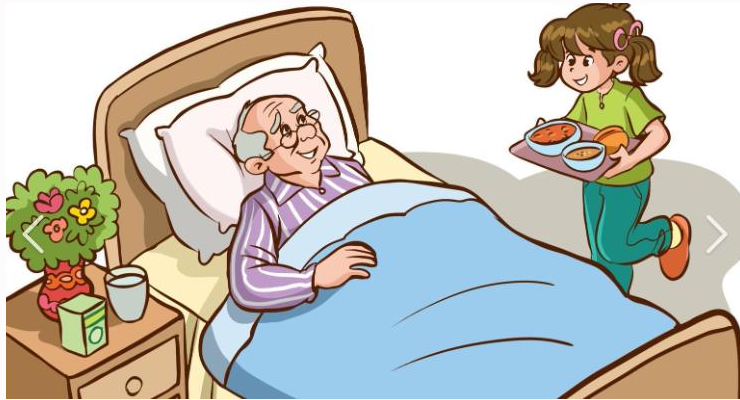
CR233, May 2022



Tubes



Nutrition is relevant to all of gastroenterology – and beyond



Nutrition involves the whole hospital

Gastro
IBD

Anaesthetics
Fitness for
surgery

**Palliative
care**
Palliative PN

**Colorectal
surgery**
PN in post-op
ileus

HPB
Nutrition
support in
Pancreatitis

Upper GI
Post-bariatric
nutritional
complications

Neurology
PEG insertion
post stroke /
MND

Elderly care
Nutritional
support at end
of life

Haem
Inpatient PN for
GVHD / post
BM transplant

Vascular
PN for gut rest
with mesenteric
ischaemia

ENT
Nutrition during
cancer
treatments

Psychiatry
Anorexia
nervosa

Immunology
CVID

Oncology
Nutrition
support during
chemo/
radiotherapy

ICU
PN

Hepatology
Nutrition
support in
cirrhosis

Endocrine
Diabetic
gastroparesis

**Medical
Ethics**

Team sport



Intestinal Failure

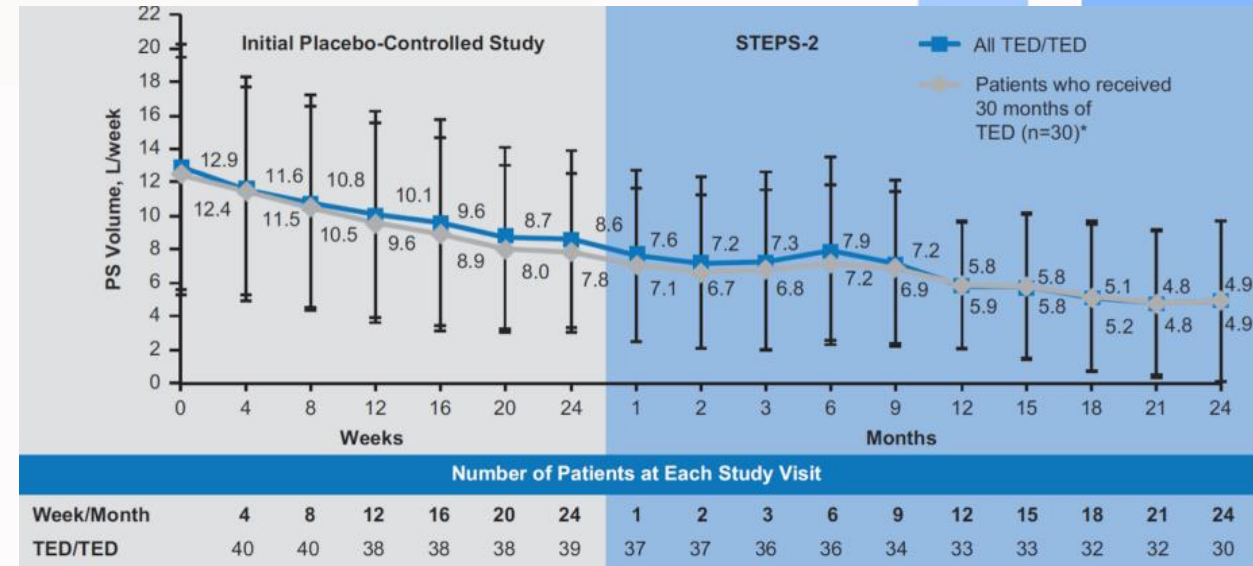
Type 1 IF	Type 2 IF	Type 3 IF
Acute < 28 days	Subacute Months to years	Chronic
Post-operative Ileus Enteritis <ul style="list-style-type: none"> • Infection • Chemotherapy 	Post-surgical sepsis Obstruction Dysmotility Fistula	Short bowel Dysmotility Obstruction Mucosal disease <ul style="list-style-type: none"> • Crohn's • Radiation enteritis
Unstable	Unstable	Stable
		Rare

Growth factors



Teduglutide for treating short bowel syndrome

Technology appraisal guidance [TA804] Published: 30 June 2022



Intestinal and Multivisceral Transplant

IFALD

Impending loss of vascular access

QOL

Recurrent catheter related bloodstream infections

Need for simultaneous multi-organ transplant

Table 6.5 Unadjusted five-year patient survival (%) for adult first intestine transplants between 1 April 2014 and 31 March 2024, by transplant type

Transplant type	Number of transplants	5-year survival (95% CI) <u>Unadjusted</u>	
Cambridge			
Liver containing ¹	54	59.5	(43.6-72.4)
Non liver containing ²	52	82.1	(65.6-91.1)
Oxford			
Non liver containing ²	39	53.3	(39.1-70.7)
Total			
Liver containing¹	54	59.5	(43.6-72.4)
Non liver containing²	91	68.5	(54.5-78.9)

¹ Includes liver, bowel & pancreas, multivisceral and liver & bowel transplants

² Includes intestine only, bowel & pancreas, modified multivisceral transplants

Opportunities

- All hospitals should have a nutrition team – join them!
- Nutrition Steering committee
- Think about nutrition in all your patients

- Join BAPEN as a trainee member- free
- Join committees
 - BAPEN Trainees committee
bapenmedicaltrainees@gmail.com
 - Trainee rep on BSG Small bowel nutrition committee

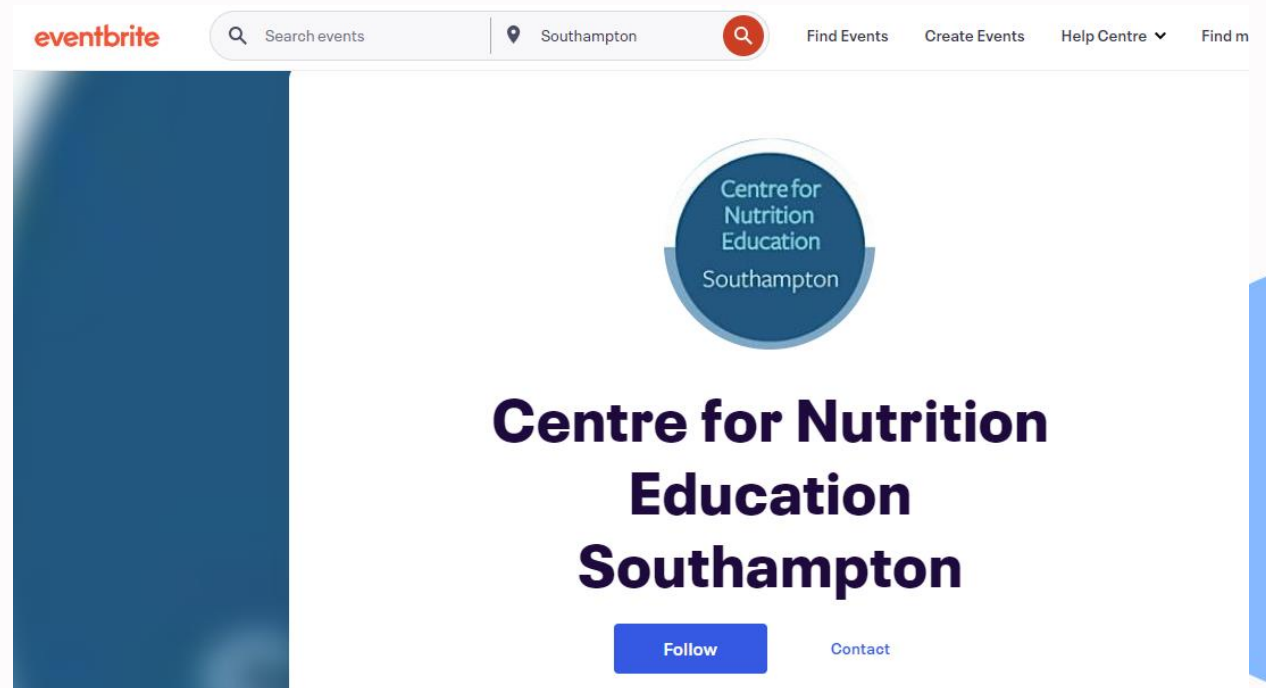
- European Society of Parenteral and Enteral Nutrition (ESPEN)
Lifelong learning modules (LLL)

Educational events

- **BAPEN Masterclass, Gateshead, Monday 4/11/24 £50**
- BAPEN Conference, Gateshead Tuesday – Wednesday 5-6/11/24 and Cardiff November next year
- BAPEN/ BSG Advanced Nutrition course?????
- Clinical Nutrition Webinars – free
Email CNWebinars@gmail.com with name, job role, place of work to register for monthly webinars (live or on catchup)
- ESPEN meeting September

Multi-day clinical nutrition courses

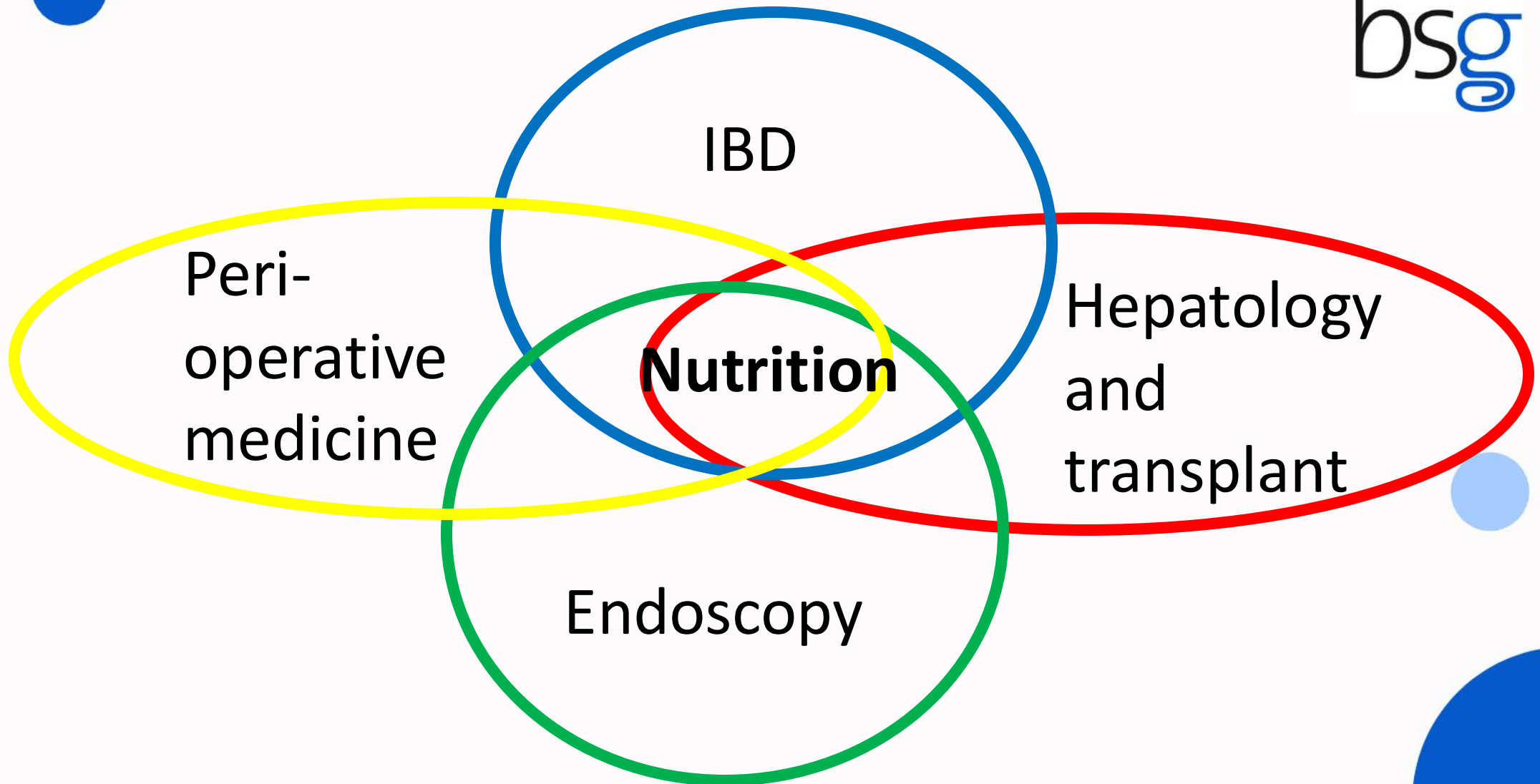
- Southampton
 - likely June 2025, TBC
- Leeds
 - 3-5 September 2025
- Newcastle
 - *provisionally* 17-19 March 2025
- St Mark's Horizons (IF)
 - 16-18/10/24





Fellow posts

- IF centres
 - Southampton and I am sure others!
 - Emily.clarke@uhs.nhs.uk
- Transplant centres
 - Cambridge
 - Multiple posts, IF and transplant – likely Aug / Sep / Oct starts, nhs jobs website
 - Crutter@nhs.net
 - Oxford
 - IF and transplant – Philip.allan@ouh.nhs.uk
- Research



Thank you

