

Combining research and Clinical responsibilities in the NHS

Dr. Rachel Cooney

Consultant Gastroenterologist, NIHR Research Scholar,

Hon Lecturer University of Birmingham

National trainee Research Day NIHR-BSG



Why did you do that?



Research on Gallbladder function



D.Phil -Autophagy in Crohn's disease



Hydatid disease
in the Turkana People

Why bother ?

Patients



Personal



Building your research from SpR to consultant level in the NHS Research networks



Protected time

Monday	Tuesday	Wednesday	Thursday	Friday
IBD obstetric clinic/educational supervision	Endoscopy	Np/pouch	MDT/triage/referrals	SPA
IBD Clinic	SPA	Endoscopy	Research- funded by NIHR research scholarship	Research- funded by NIHR research scholarship
One in 6 covering wards	One in 6 covering emergency bleeds and Inpatient referrals	Conference		

Jan	Feb	March	April	May	June
Clinical	Research	Clinical	Clinical	Research	Clinical

£- funding

HTA funded OCEaN study





Feature	Questions to Ask
Problem base	Is there a health problem that is big/important enough to fix?
Context placement	Has prior evidence been systematically assessed to inform (the need for) new studies?
Information gain	Is the proposed study large and long enough to be sufficiently informative?
Pragmatism	Does the research reflect real life? If it deviates, does this matter?
Patient centeredness	Does the research reflect top patient priorities?
Value for money	Is the research worth the money?
Feasibility	Can this research be done?
Transparency	Are methods, data, and analyses verifiable and unbiased?

Think of your clinic as your laboratory
Mould your clinic into your research interest

- Give lectures -locally, med students
- Write review articles
- Attend patient support groups
- NICE committee
- Accept invites to review papers



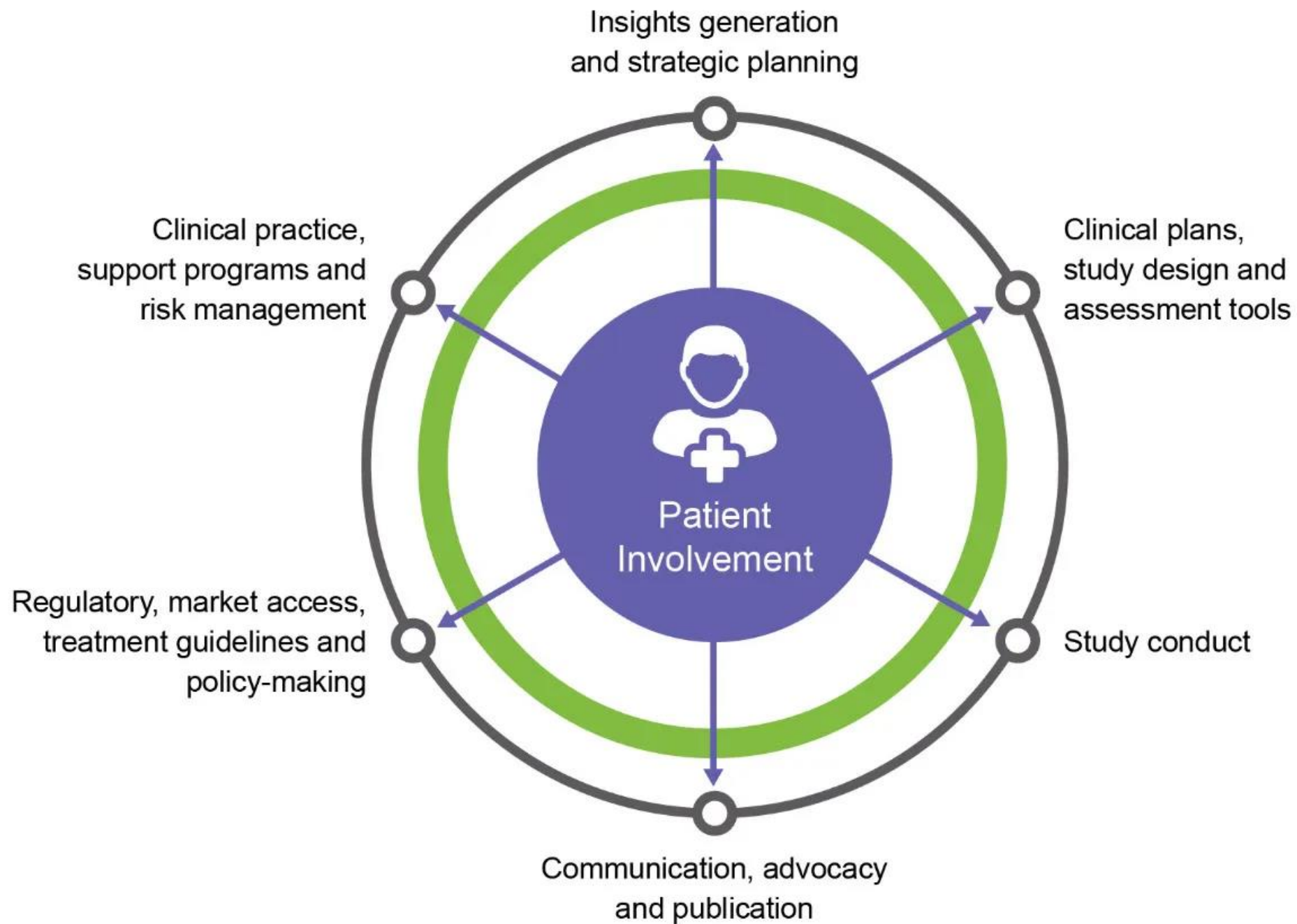
Research Team

- Research nurse is key person in your team
- Portfolio studies - will give you nursing support
- Build your team by getting commercial studies
- Collaboration with Pharma

In your research time

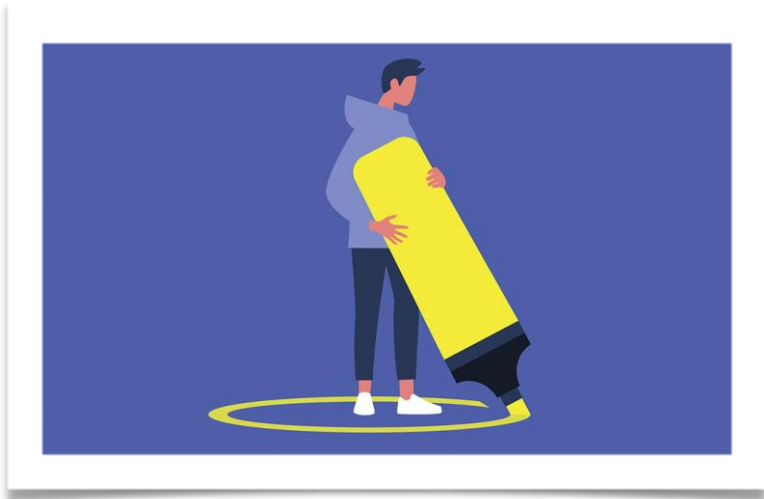
- Tap into a Research Development service/Trials unit
- Key to get expertise EARLY on budget, statistics and study design





In your clinical time:

- A phone call can often be quicker than back and forth emails
- Can someone else manage that urgent issue?
- Leave the primary care with the GP when appropriate



In your research time

- Put on your out of office
- Use a separate research email
- Sign up to email alerts about grant deadlines
- Email alerts about article in your area of interest



Collaborate Peer mentoring

Meet your deadlines

Be honest

Define roles

Agree authorship early

Appreciate other peoples styles

Avoid politics

Territoriality





‘The important thing is not to stop questioning. Never lose a holy curiosity.’

